

Master

Fellowship

in MicroAesthetics

This fellowship programme is an eminently prestigious certification awarded by the esteemed University of Saveetha aimed at enhancing the clinical skill and knowledge of students using advanced magnification techniques.

MASTER FELLOWSHIP IN MICRO – AESTHETICS

(Affiliated and accredited by Saveetha University.)

“Master Fellowship In Micro-Aesthetics” is a prestigious qualification which carries with it a responsibility to enhance the current practice of Aesthetic dentistry by using contemporary magnification technologies

OBJECTIVES

Understanding the critical elements of tooth anatomy, mastering the intricate details of tooth handling, exploring the nuances of various materials in restorative dentistry and acknowledging the beneficial role of magnification is the key in achieving superlative and predictable clinical success. This is the main objective of this fellowship programme.

COURSE COMPONENTS

The participant's knowledge and skills in esthetic dentistry will be developed through lectures, contact sessions, case presentations, interactive learning, online tutorials and clinical experiences. A substantial part of this programme would include hands-on experiences in the state of the art clinical facility. The main focus of this structured clinical programme is to develop a comprehensive approach to fulfil the complex aesthetic requirements of the patients

ELIGIBILITY CRITERIA

Candidates with Master's In Dental Surgery

- Conservative Dentistry and Endodontics
- Prosthodontics



DIRECT RESTORATIONS

Case selection

1. Shade selection

- a) Using shade guides
- b) Creating custom made shade guides
- c) Simple and realistically modified techniques

2. Isolation - rubber dam

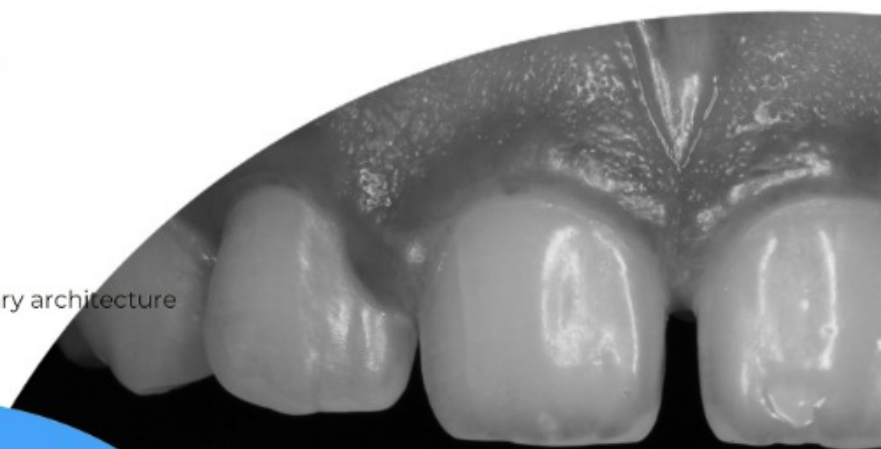
- a. Single tooth isolation
- b. Posterior quadrant isolation
- c. Anterior sextant isolation
- d. Full arch isolation
- e. Clamp selection
- f. Floss ties
- g. Additional armamentarium - such as teflon tapes, liquid dams etc

3. Cavity preparation

- a. Cavity preparation with lasers (demonstration)
- b. Minimal invasive techniques using ultrasonics, lasers and electronic handpiece
- c. Bevels (macro and micro)
- d. Perfect margin criteria
- e. Tunnel, internal, mini box ,slot preparation techniques (for class 2)

4. Restorative step

- a) Etching bonding (clinical prespective)
- b) Creation of palatal shelf (class 4)
- c) Matrices and wedges
- d) Mapping of tooth
- e) Layering techniques
- f) Creating primary, secondary and tertiary architecture



INDIRECT RESTORATIONS

Case selection for inlay and onlay

1. Preparation criteria

- Using ultrasonics - slow and high speed
- Achieving peripheral marginal anatomy
- Immediate dentinal sealing

2. Impression

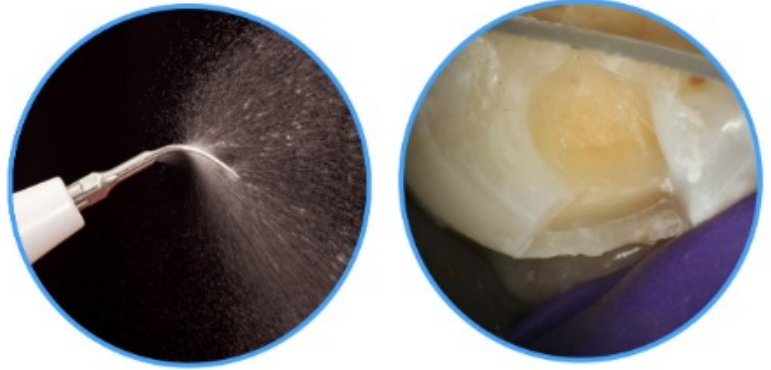
- Digital
- Manual

3. Temporisation

4. Chair side immediate inlay and onlay using the latest lab composite

5. Laboratory communication

6. Cementation protocols



Indirect restoration - Laminates

1. Case selection

2. Pre evaluative temporaries

3. Tooth preparation

4. Finishing

5. Impression - digital and manual

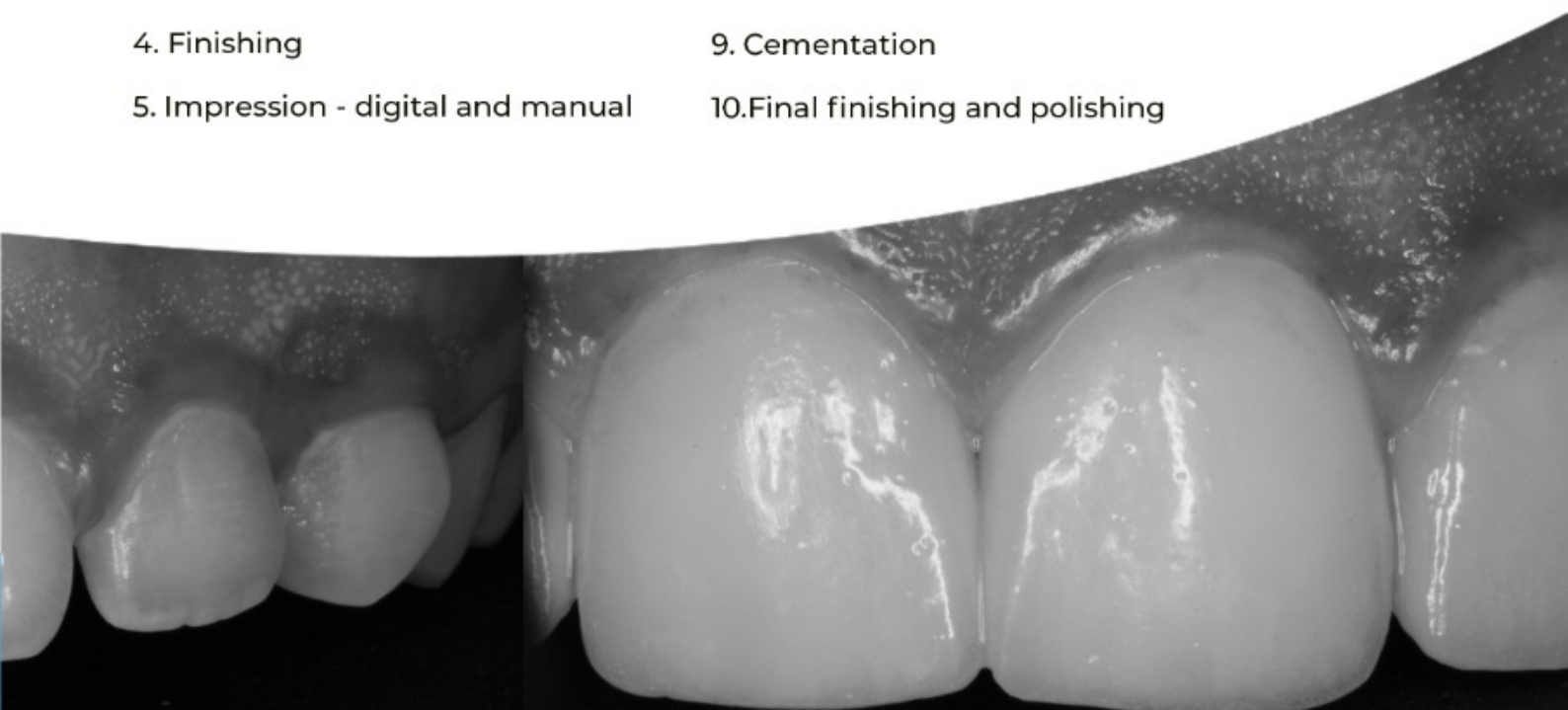
6. Temporisation

7. Lab communication

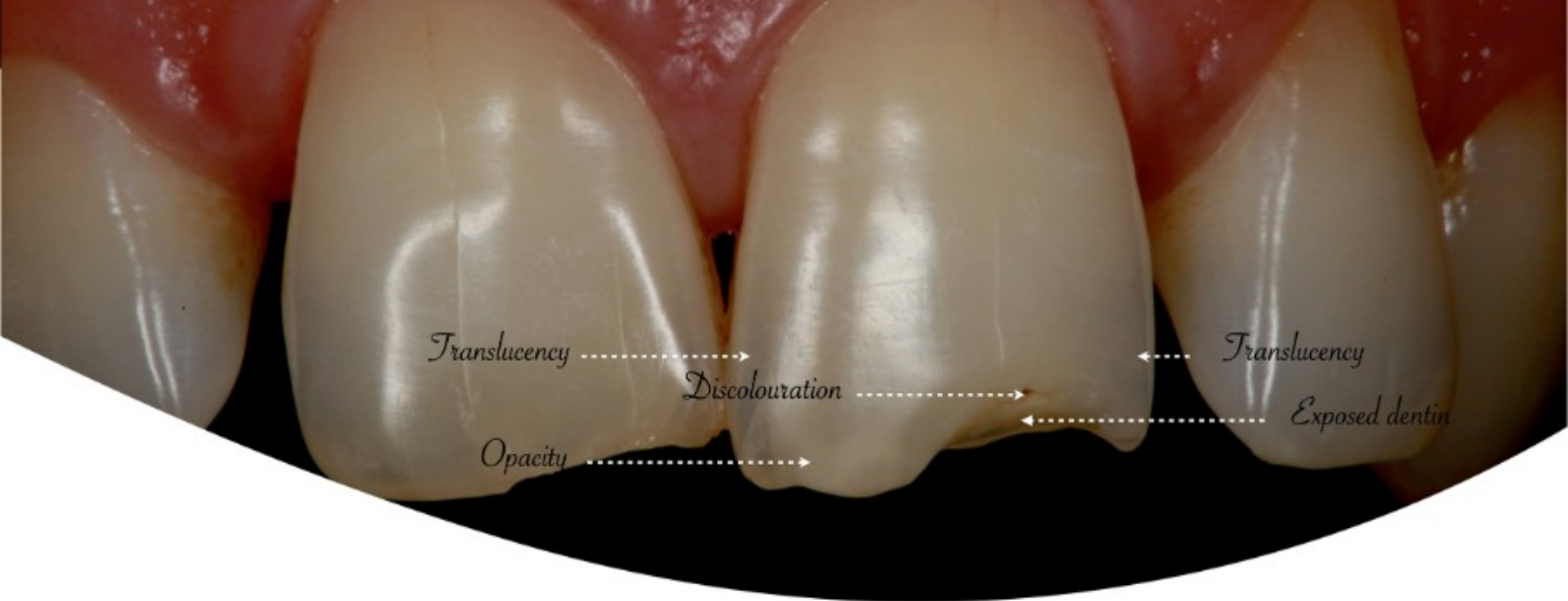
8. Try in

9. Cementation

10. Final finishing and polishing



Growth is contagious



PROGRAMME DURATION

6 months (Part time) Divided into two modules followed by case presentations. **This certificate programme will be conducted by Saveetha University in association with “Yours Dentally”, Chennai.**

CORE CURRICULUM

Theory/Practical/Demonstration



Introduction To Microscopes

Anatomy of dental operating microscopes
 Detail discussion on the optics and optical components
 Magnification settings
 Ergonomics

Photomicrography and documentation

Light source and its importance
 Types of camera - mirror / mirror less
 Macro photography
 Bean splitter/dual iris/ adapters
 Post processing and storage

Introduction to Tooth Anatomy

Back to basics with drawings - anterior and posterior

Introduction to Loupes

Anatomy of loupes
 Selection criteria
 Types of loupes
 Limitation of dental loupes

Smile designing

Understanding “natural” smile
 Understanding white and Pink esthetics
 Proportions and their importance
 Macro, micro and global aesthetics

Material science

Recent advancements and clinical implications

PRECLINICAL WORK

What the centre provides

- a. Loupes
- b. Microscopes
- c. Camera - and its ensemble
- d. Typhodont models (resembling natural tooth)

What the participant have to bring

- a) High speed hand piece
- b) Contra angle
- c) Rubber dam kit

CLINICAL WORK

Clinical work to be completed by the participants in their private clinic or institution under microscope with documentation. Total cases to be submitted for case discussion are 10 cases

SCHEDULE OF EXAMINATION

Best five cases of the participant will be selected for case discussion and the presentation which will be evaluated by an external examiner. **The examination will only be held** at Saveetha dental college duly evaluated by two examiners (internal and external) . The examination will focus on clinical case presentation and discussion .

SCHEDULE OF CLINICAL WORK TO BE COMPLETED IN THE FIRST MODULE

First 3 months

Direct restorations

- a. One case each : class 2, 3 and 4
- b. One diastema closure
- c. One direct veneer

SCHEDULE OF CLINICAL WORK TO BE COMPLETED IN THE SECOND MODULE

Final 3 months

Indirect restorations

- a. One ceramic inlay
- b. One ceramic onlay
- c. One inlay/onlay with lab composites
- d. One single tooth veneer
- e. One case with multiple veneers

Fee Details & Management

Course Director : Dr. R.S Mohan Kumar
Course Coordinator - Dr. Sindhu Ramesh

Course Fee - 2 Lakhs

Contact Details

✉ mfmacourse@gmail.com
☎ 98406 66005

